



## Member's Authorisation

I wish to be included in Members Confined Car Draw.

I hereby authorise deduction of €50.00 per annum from my shares, to continue until you receive written confirmation from me to cease.

I agree to be bound by the Car Draw Rules attached.

Member's signature:

Credit Union Name:

Name (Print Clearly)

Membership Number:

Contact Telephone No.

Date

# Members Confined Car Draw

*Dear Member,*  
Our Prize Draw will continue monthly with  
12 cars as prizes.

Over the year all cars offered will be  
Peugeot 307, supplied by T&C Motors,  
Peugeot Dealers, Waterford.

Annual Subscription €50.00

**NEW MEMBERS WELCOME**



Please complete the attached authorisation form  
and hand it in to your credit union to enter.

€50.00 will be deducted from your savings at  
the end of the month in which you subscribe to  
the draw and will continue annually thereafter,  
unless you notify us in writing that subscriptions  
should cease.

**LISDUGGAN  
CREDIT UNION**

**TRAMORE  
CREDIT UNION**



## CONFINED CAR DRAW RULES

1. The draw will continue monthly until the Board of Directors of Lisduggan and Tramore Credit Unions (hereafter called the Boards) deem otherwise. It is only open to members over 18 years.
2. The annual fee will be deducted from member's shares at the end of the month in which they subscribe to the draw and will continue annually thereafter.
3. The make and type of car will be at the sole discretion of the Boards. **Cash will not be given in lieu.**
4. All draws will be held either in Lisduggan or Tramore Credit Union offices.
5. Entry is limited to ONE per member.
6. A register of entrants will be maintained at each Credit Union.
7. The Board, Staff and Volunteers of the Credit Unions will not be liable for any defects, or otherwise that may be found in any vehicle supplied.



8. Financial accounts of Draw Fund will be audited each year and presented at AGM of each Credit Union.
9. The draw will be self-financing and non-profit making. Any surplus funds will be disposed of by way of extra draws.
10. A minimum of €10 must be retained in your Credit Union account in order to remain a member, therefore a minimum of €60 is required for draw eligibility.
11. In the unlikely event of the winning member being in default of any financial commitment to the Credit Unions, the delivery of the car may be delayed and if necessary disposed of in order to meet such commitments and the nett proceeds if any paid to member.
12. The decision of the Boards concerning the foregoing rules or any matter arising from the monthly draw will be final and not subject to appeal.

**LISDUGGAN  
CREDIT UNION**

**TRAMORE  
CREDIT UNION**



**We provide personal loans  
at competitive rates to suit your needs.**

- Car Loans
- Home improvement Loans
- Student 3rd level Educational Loans
- Holiday Loans

**And the following Services**

- Free Life Savings and Loan Protection Insurance
- Savings Protection Scheme
- €2 Savings Stamp
- V.H.I./BUPA Scheme
- MABS - Money advice and budgeting service
- Low Cost Death Benefit Insurance
- Annual Dividend on Shares
- Foreign Exchange Facilities
- Travellers' Cheques
- Travel Insurance
- Paypoint Service

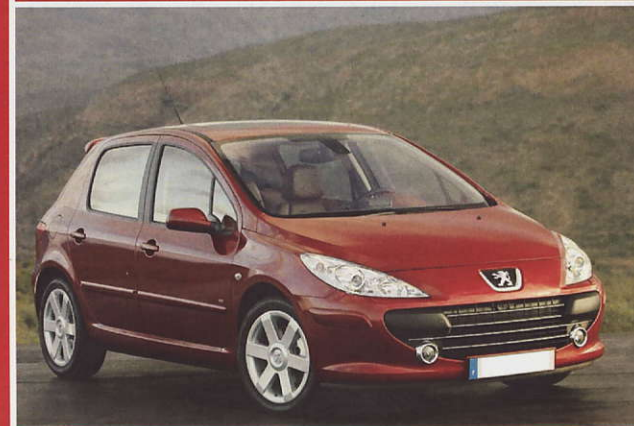
GRAPHIC IMAGE 051 85 87 87

**NOT FOR PROFIT, NOT FOR CHARITY  
BUT FOR SERVICE**



**LISDUGGAN  
CREDIT UNION**

**TRAMORE  
CREDIT UNION**



**ENTRY FORMS  
AVAILABLE FOR CAR DRAW  
NEW MEMBERS WELCOME**

**Members  
Confined Car Draw**

IN ASSOCIATION WITH



[www.tandcmotors.ie](http://www.tandcmotors.ie)

**LISDUGGAN  
TRAMORE**